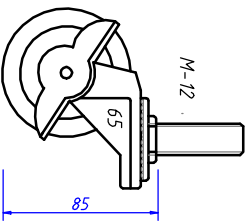
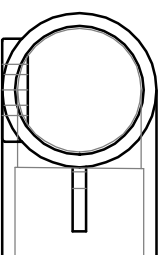
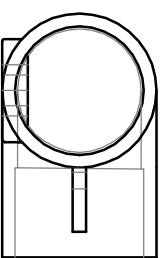
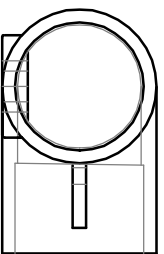
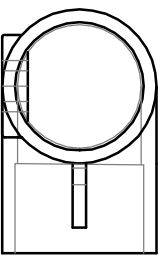
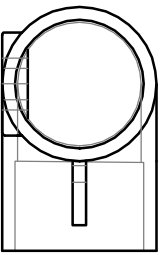
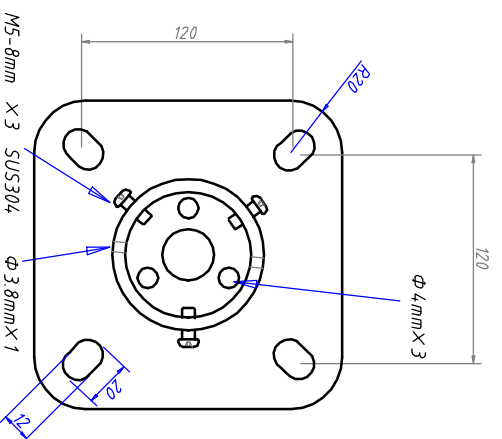
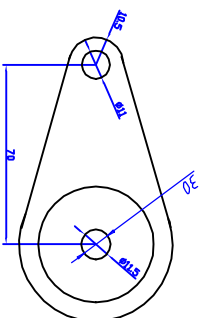
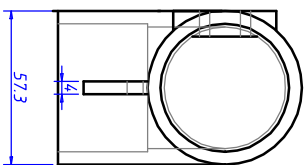
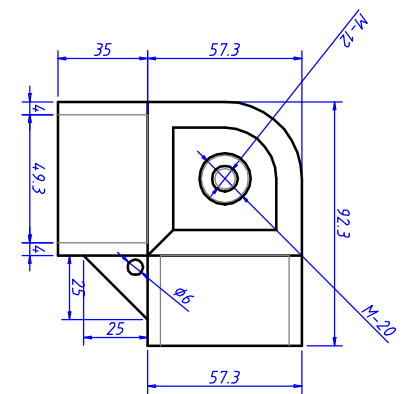
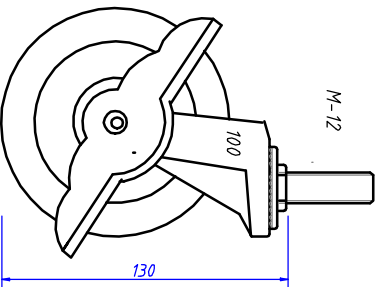


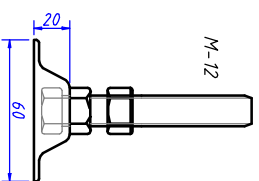
14-2L65・14-2L100・15-2L500・15-2L500(フカ-)・15-2L2000



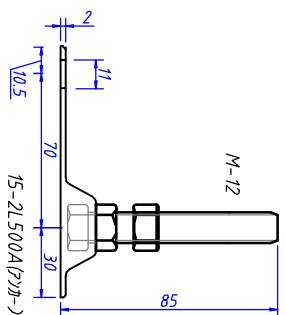
14-2L65
30kgストッパー付タイプ



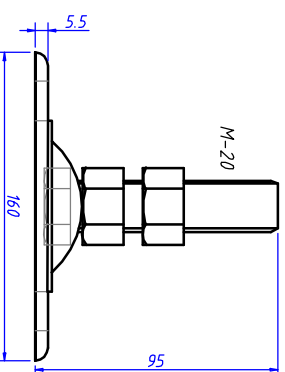
14-2L100
50kgストッパー付タイプ



水平調整 30mm 500kgタイプ



水平調整 30mm 500kgタイプ



水平調整 25mm 2t タイプ

| FILE NAME | F-999-20070524 Auto CAD |
|-----------|-------------------------------------|
| DRAWN | 14-2L65・14-2L100・15-2L500・15-2L2000 |
| CHECK | Joint Kogyo Tokano |
| APPR | |
| ISSUED | |