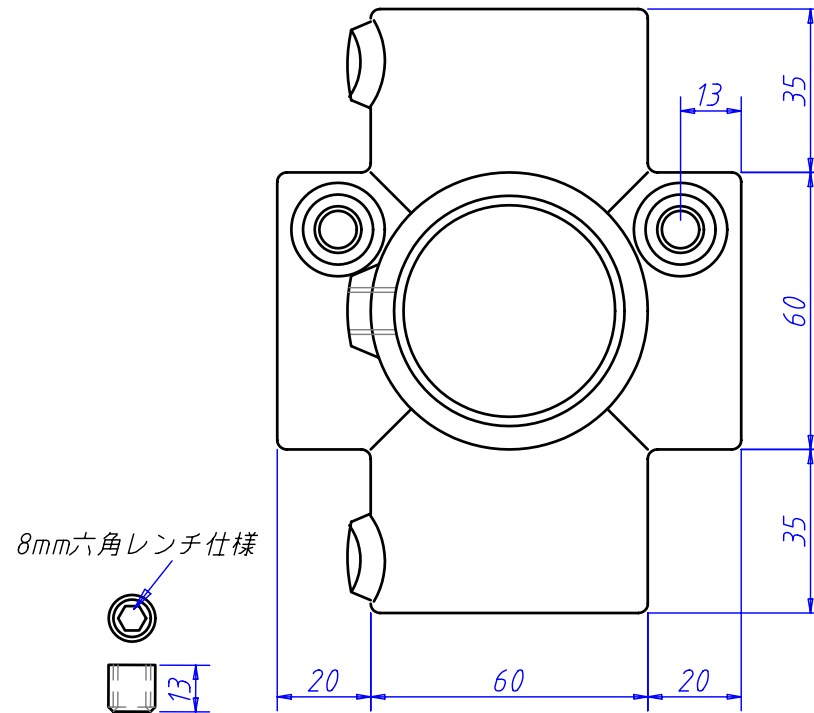
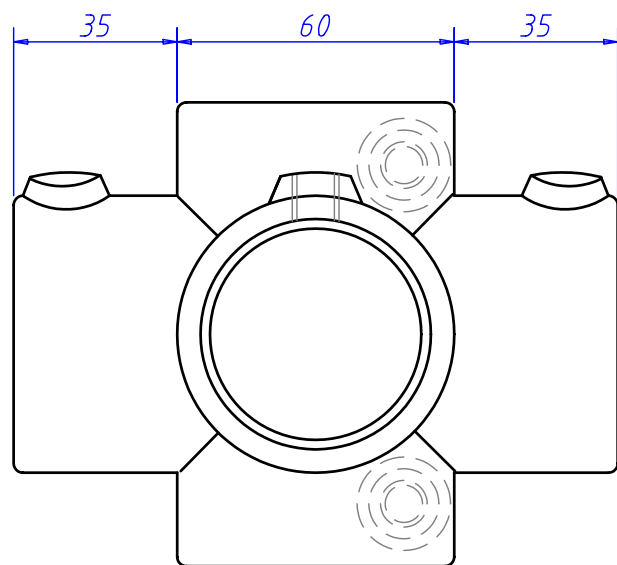
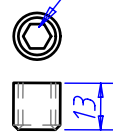


パイプ貫通箇所



8mm六角レンチ仕様



PF3/8 inch 19yama クボミ先ホーローセット使用

パイプ6方出1箇所貫通

重量 1330g

JAN 4562182300324

FILM NAME	F-999-20111128 Auto CAD
DRAWN CHECK APPR ISSUED	S-2-5Z SET SCREW COUP joint kogyo T.okano